

# How to Remotely Access the XL2 Sound Level Meter



XL2 Sound Level Meter

This document describes how to remotely access the XL2 Sound Level Meter via the NTi Audio Gateway.

## Minimum Requirements

- XL2 Sound Level Meter
- NetBox, Communication Hub for XL2
- Computer with internet connection

## First Steps

- Login at <https://my.nti-audio.com>.
- Register the NetBox using the Serial Number on the front of the NetBox (format xxxxx-xxxxx).
- Login at [www.noisescout.com](http://www.noisescout.com) using your personal My NTi Audio username and password.

👉 The NetBox is listed under “My Noise Monitors”

- Switch the Noise Monitor to “Gateway” Mode. (Ensure that the Noise Monitor is not assigned to a Location in Managed Mode.)

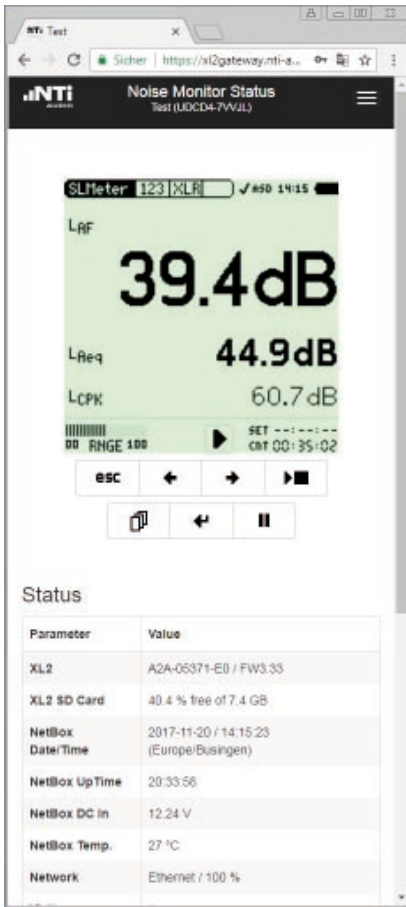
My Noise Monitors

Serial #	Name	LAF Live				Mode	Job	Location
UDCD4-7VVJL	<a href="#">Test</a>	0.0	12.2 V	Ethernet 100 %	25.0 °C	<a href="#">Gateway</a>	<a href="#">Visit</a>	

NetBox Serial Number

Switching between Managed and Gateway Mode

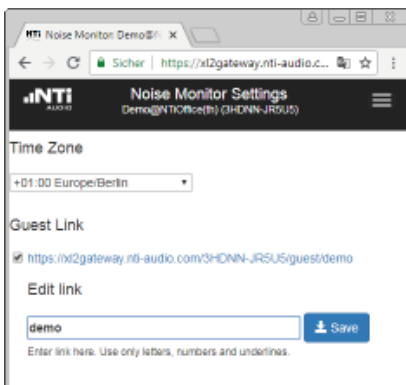
List of Noise Monitors in the dashboard of [www.noisescout.com](http://www.noisescout.com)



Noise Monitor Website in Gateway Mode

## Connecting the remote XL2 Sound Level Meter

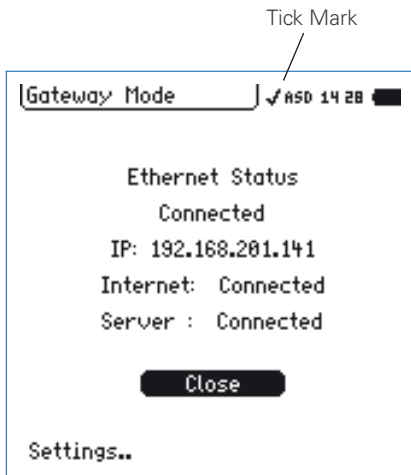
- Connect the XL2 Sound Level Meter to the NetBox.
  - Connect mains power to the NetBox.
- 👉 The NetBox and XL2 powers up within approx. two minutes.
- Press the "Visit" button in the dashboard.
  - Enter your personal My NTi Audio password again.
- 👉 The browser window "Noise Monitor Status" is displayed.
- Control the remote XL2 from within the browser.



Setting Time Zone and Guest Link

## Settings

- Select Settings in the the browser menu
- Set the time zone
- Activate a "read only" guest link as required. The last part of the link may be edited.
- Select Status in the menu to return.



IP-Address of Noise Monitor

### Connecting the XL2 within a local Network

The XL2 may also be remotely operated within a local network using the IP address of the connected NetBox.

- Verify the IP address by selecting the tick mark on the top line of the XL2 display.
- Confirm your selection with the enter button.
- 👉 The XL2 displays the IP address of the NetBox within the local network.
- Type this IP address into your preferred browser.
- Enter your personal My NTi Audio password.
- 👉 "Noise Monitor Status" is displayed in the browser window.
- Control the XL2 from within the browser.



NetBox with 3G Modem

### Direct File Access to the XL2

- Install your favorite SFTP client software on your computer (such as WinSCP, <https://winscp.net> or similar).
- Enter these settings in the SFTP client software:
  - Host: [xl2gateway.nti-audio.com](https://xl2gateway.nti-audio.com)
  - Username: <xxxxx-xxxxx> (NetBox serial number)
  - Password: <your my.nti-audio.com password>
  - Port: 22
- 👉 The direct file access to the XL2 is enabled
- Download the required data for
  - completed measurements from the folder "Projects"
  - any ongoing measurements from "Projects/.Unsaved/SLM"

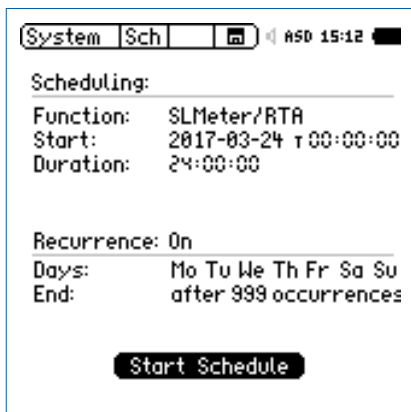
## Programming your own Remote Application

---

You may program a customized measurement application for remote sound level monitoring, audio analysis or automated measurement tasks.

All remote measurement commands are available once the Remote Measurement Option is installed on your XL2. The measurement data may be captured in real time into a PC application, e.g. C# or LabView.

See the Remote Measurement Manual for more details.



Recommended Scheduler Settings on XL2

## Best Practice

---

We recommend starting new reporting files for every calendar day. For this purpose set the XL2 Scheduler in the System Settings as displayed here on the left. Please refer to the XL2 User Manual for further details.

Monitor the online/offline status, power supply voltage, network status and ambient temperature of your NetBox at [www.noisescout.com](http://www.noisescout.com). You may log in using your personal My NTi Audio username and password.

## How to setup an automated Data Download via FTP

---

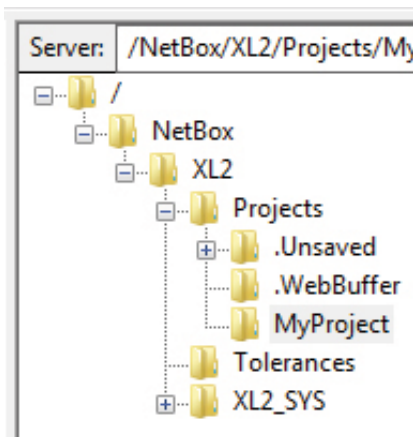
Commercial programs like WatchFTP, [www.watchftp.com](http://www.watchftp.com), can be used to automatically access and download the available data from the XL2 and delete the data from the XL2 SD-Card if required. This solution allows you to download the data files from many remote noise monitors to your local drive.

### Server Verification

SFTP protocol versions use different host keys. When your SFTP client connects to the server for the first time you may be asked to trust the host key. To confirm that you are actually connected to the correct server ([xl2gateway.nti-audio.com](http://xl2gateway.nti-audio.com)), your SFTP Client should show one of the following fingerprints:

Algorithm	Key length [bit]	Key Fingerprint
ED25519	256	SHA 256: KPr/08XsmkNmhYyVP1ta+21z7lvp48ZGksjICyc4YJA MD5: 82:f4:d5:c1:f6:94:d3:09:ee:f2:15:69:a0:d8:2c:1e
ECDSA	256	SHA 256: tt2S3pUICyu19uLPtO11E+IC/khuJwXijGEjeR3zpHU MD5: 4a:2b:3c:18:ca:7c:68:7b:82:e0:cb:fa:c2:4b:51:cc
DSA	1024	SHA 256: j74iOEBG3mbkx+zT4AvihsVKG81hky1sOfZ5sukmsNw MD5: fe:d8:2f:51:9e:7b:d4:0f:84:76:dd:a9:80:b7:0a:e6
RSA	2048	SHA 256: YoH4hFprpwtQ58yfPL5apRsubpNV3acghEcMykmgkIU MD5: 33:c7:43:72:81:16:de:98:91:a1:ec:42:ec:fb:cb:e6

Table of Key Fingerprints confirming the trusted Connection



Directory Structure

### Trouble Shooting

The root directory of your login contains the subdirectory /NetBox. This contains the XL2 root directory of the SD card.

- NetBox offline  
In case the NetBox is not connected to the server, the /NetBox directory contains a file named "NetBox is Offline.txt"
- XL2 not connected  
In case the XL2 is not connected to the NetBox, the /XL2 sub-directory contains a file named "XL2 not mounted.txt". Verify that your XL2 is powered on, an SD-Card is inserted in the XL2 and the XL2 is connected via USB to the NetBox.

During ongoing measurements, all data is stored in temporary files in the folder '/Projects/.unsaved/SLM/'. As soon as the measurement is completed these files are moved to the current Project folder and renamed to their given filename. Reading the temporary files provides access to the latest measurement data. Kindly be aware of the following details:

- There might be a delay between the time that values are measured and the time that the data is available in the temporary file.
- Due to latency in writing, you may possibly miss the last 10 seconds of audio data.